



## February 2009 Newsletter

### News

#### Pain Initiative Update

On 6 February, the second group of emergency departments commenced their formal involvement with the National Emergency Care Pain Management Initiative. Over 60 delegates representing 25 emergency departments attended the workshop which highlighted current trends and barriers and enablers to evidence-based pain management in the emergency care setting. Discussions were led by the initiative's committee chair and former NICS Fellow A/Prof Steve Doherty, and guest speakers including Dr Jonathan Knott and Dr Elizabeth Cotterell. Sue Huckson and Scott Bennetts from NICS presented an overview of the Pain Management Initiative.

Fifty-five emergency departments across Australia are now participating in this 18 month program which is being delivered in two waves. Early analysis from Wave One teams has confirmed the following gaps in practice:

- 41% of patients in pain receiving a pain score
- 30% of patients in severe pain receiving analgesia within 30 minutes.

Local audit data will be used to guide project team activities, and aggregate data will be used to inform future quality improvement activities in emergency care.

#### Blog - [www.emergencycare.nhmrc.gov.au/blog](http://www.emergencycare.nhmrc.gov.au/blog)

There has been some interesting topics discussed on the EC CoP Blog site this month including the following topics:

- [Free video download of emergency education sessions from Canadian Emergency Care group](#)
- [Paediatric burns management](#)
- [Ankle sprain management](#)
- [Best practice management of whiplash](#)
- [Drug terminology, abbreviations and symbol recommendations](#)
- [Elbow extension test to rule out elbow fracture](#)

If you have any learning tools or other resources that you are able to share on the blog, please let us know. Email Scott at [scott.bennetts@nhmrc.gov.au](mailto:scott.bennetts@nhmrc.gov.au)

#### Chest pain evidence update

The UK Cardiovascular Diseases Specialist Library has published their 2009 Annual Evidence Update on Chest Pain. This is an update on significant advances in knowledge about chest pain since 2007.

Go to: [www.library.nhs.uk/cardiovascular/viewResource.aspx?resid=305729](http://www.library.nhs.uk/cardiovascular/viewResource.aspx?resid=305729)

### Guideline of the month

Institute for Clinical Systems Improvement (ICSI). Diagnosis and treatment of chest pain and acute coronary syndrome (ACS). 2008. [Link to this guideline](#)

Please see the NICS Emergency Care Guideline Portal for more guidelines on this, and many other emergency care topics - [www.emergencycare.nhmrc.gov.au/portal](http://www.emergencycare.nhmrc.gov.au/portal)

### Articles of interest

Sex differences in medical care and early death after acute myocardial infarction. Circulation. December 16/23, 2008. Pages 2803 - 2810 [LINK](#)

Imaging does not alter outcomes in acute low back pain. Lancet. 2009 February 7; Volume 373. Pages 463-472 [LINK](#)

Emergency Management of Pediatric Convulsive Status Epilepticus. Pediatric Emergency Care. February 2009. Volume 25, Number 2, Pages 83-87 [LINK](#)

### Talk to the experts

In our next teleconference we will be meeting with Lisa Kuhn, RN, PhD Candidate, Australian Catholic University, St. Vincent's Hospital (Melbourne). Lisa has an interest in Acute Coronary Syndrome and in particular the differences in the clinical presentation between men and women.

#### Teleconference details:

**Guest speaker:** Lisa Kuhn

**Topic:** Insights into ACS in women

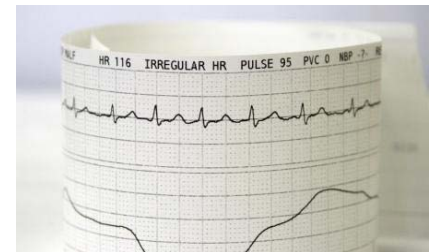
**Date:** Friday March 27

**Time:** 1.30pm - 2.30pm AEDT

**Phone:** 1800 200 232 and enter PIN: 011363 at the prompt.

#### Related articles:

Symptoms of men and women presenting with acute coronary syndromes. American Journal of Cardiology. 2006. Nov.1; Vol. 98 No. 9. Pages 1177-1181. [LINK](#)



### Victorian bush fires

Many of you have been greatly affected by the Victorian bush fires either personally or through your professional roles. Emergency teams always seem to band together in times like these, and despite the tragic circumstances, are able to look out for each other. Take care of yourself, family, friends and colleagues in these tough times.

Best wishes from the NICS team.

#### Contact us:

National Institute of Clinical Studies  
National Health and Medical  
Research Council  
GPO Box 4530 Melbourne 3001  
T. +61 3 8866 0400  
E. [scott.bennetts@nhmrc.gov.au](mailto:scott.bennetts@nhmrc.gov.au)  
W. [www.nhmrc.gov.au/nics](http://www.nhmrc.gov.au/nics)